

# LOCK INSTALLATION

1. Preset code is 0-0-0. Turn knob to 12 O'clock / Open position (Image 1-1). Take off the small nut and cam by wrench (Image 1-2).



Image 1-1

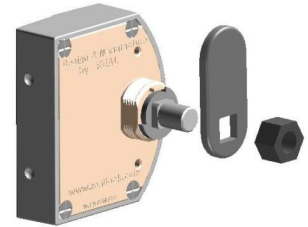


Image 1-2

2. Put the lock into mounting hole on door, then tighten the big nut and fix the lock. (Image 2).

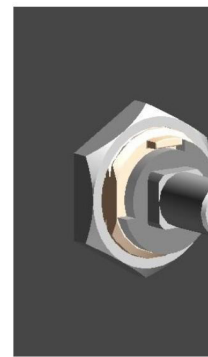


Image 2

3. Make sure the cam control-plate position as Image 3 for right hinged door.

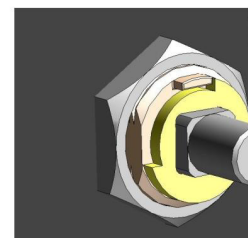


Image 3

4. Attach the cam pointing the 12 O'clock / Open position (Image 4-1), tighten the small nut and fix the lock (Image 4-2).

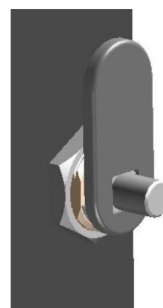


Image 4-1

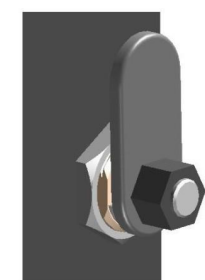
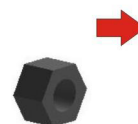


Image 4-2